



WINDERMERE
SCHOOL
FOUNDED 1863

NEW JUNIOR SCHOOL FACILITIES
Relocation to the Senior School site, 2025



Welcome

In response to the Government's announcement of 20% VAT on fees for independent schools, Windermere School will be moving to one site. The move to become one school, on one site, has been in the making for several years, however, in anticipation of VAT following the result of the General Election and a determination not to compromise the school's unique offering and experience for all pupils, the decision was made to come together.

The Junior School campus, on Ambleside Road, will be relocated into freshly refurbished and renovated facilities on the Senior School site. This transition will take place for the start of the Summer term 2025.

The Governors have also announced a reduction in fees for the youngest year groups and an increase below the level of VAT for all others. Chair of Governors,

Mr. Peter Hogan, said "In the face of this large and sudden increase in costs, we are not prepared to cut back on what we offer children or compromise the quality and variety of our extra-curricular activities. At the same time, we do not want parents to have to bear the full impact of the tax."

Head of Windermere School, Mr. Frank Thompson, said "We are aware of the magic of our Junior School, which resides in our wonderful community of children, staff, and families, rather than the building. We will not lose sight of what makes our Junior School such an exceptional place for children to learn and grow. We are also looking forward to being together as one community on one site, with the happy sound of young children in the grounds."

Frank Thompson
Head of Windermere School

PRE-PREP CONCEPT IMAGERY & SITE PLAN

Pre-School to Year 2

Our Pre-Prep children (Pre-School to Year 2) will have their own home in the former Head Teacher's house, nestled between the Jenkins and Langdale buildings. This separate two-storey building is being extended and refurbished to suit our youngest pupils' needs and will open onto a beautiful mature garden area and new playground facilities.



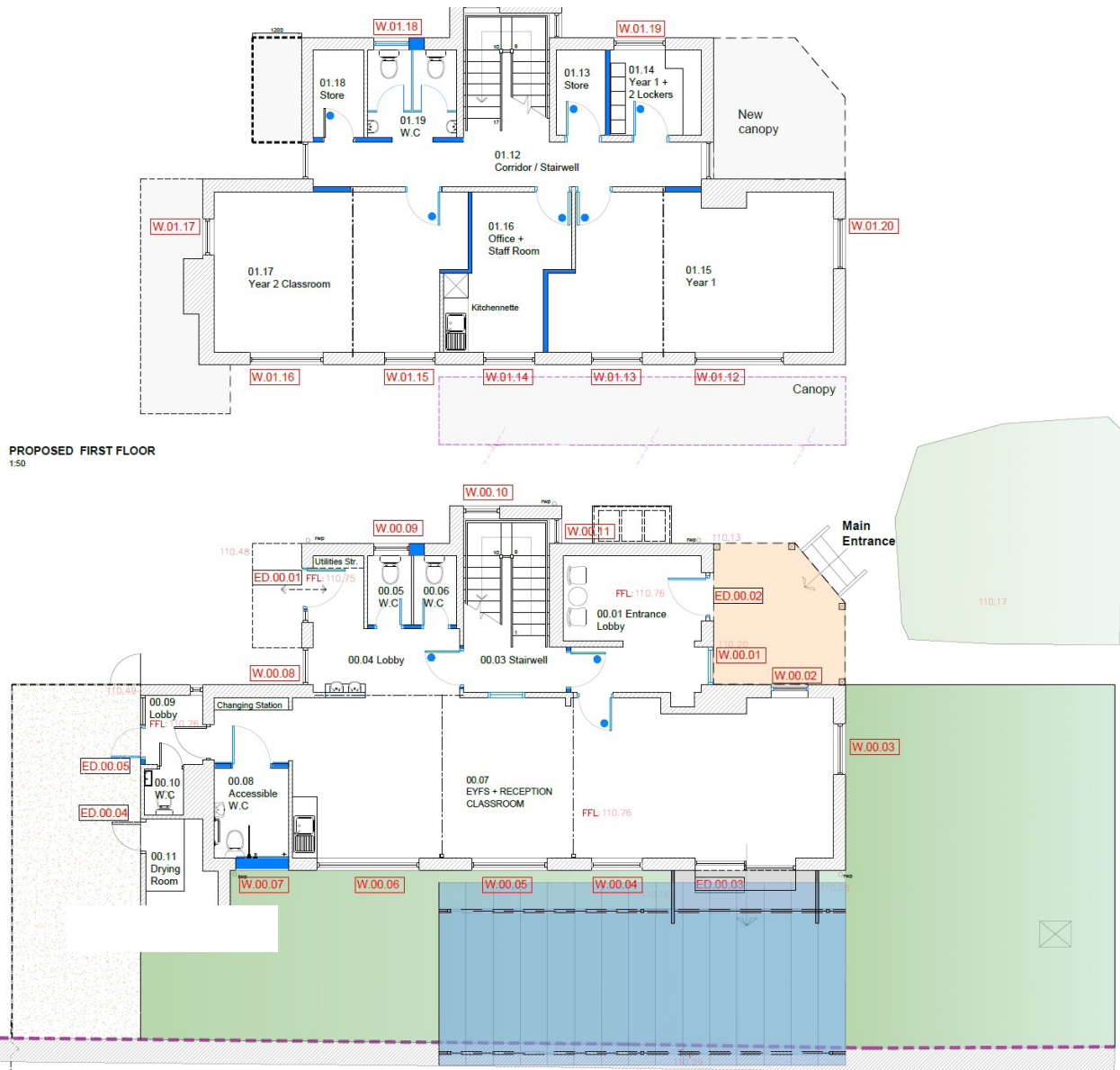


PRE-PREP FLOOR PLAN

Pre-School to Year 2

The floor plan of the Pre-Prep has been designed to suit the needs of our youngest children. The ground floor will consist of a welcome space, cloakroom and an airy open plan classroom for Pre-School and Reception children, with areas for wet play, construction, art, and exploration, as well as a free-flow outdoor space. Some of the most valuable learning happens outside the classroom, and we aim to provide as many opportunities as we can for children to explore the world.

The first floor will house Years 1 and 2 in rooms with arguably the best views in the school, bringing the outdoors in. Our aim is to create a lively and vibrant environment which promotes an independence of spirit, a willingness to 'have a go' and a determination to succeed.





PREP SCHOOL FLOOR PLAN

Year 3 to Year 6

Prep School children (Years 3 to 6) will be housed in the heart of the school, on the first floor of the main school building, Browhead. These rooms are some of the most beautiful in the school, with fine proportions, high ceilings and stunning views across Windermere.

Children will have their own Art Room, Music Room, Wellbeing Centre, Learning Support and locker rooms located within the newly renovated space, and Year 6 will retain their much loved common room. Children will also have age-appropriate access to all the specialist facilities of the Senior School such as Crampton Hall theatre, Ceramics Studio, Sports Hall, Science laboratories, ICT suite, Pi Lab and Astro turf. DT has also been relocated, continuing this specialist provision.



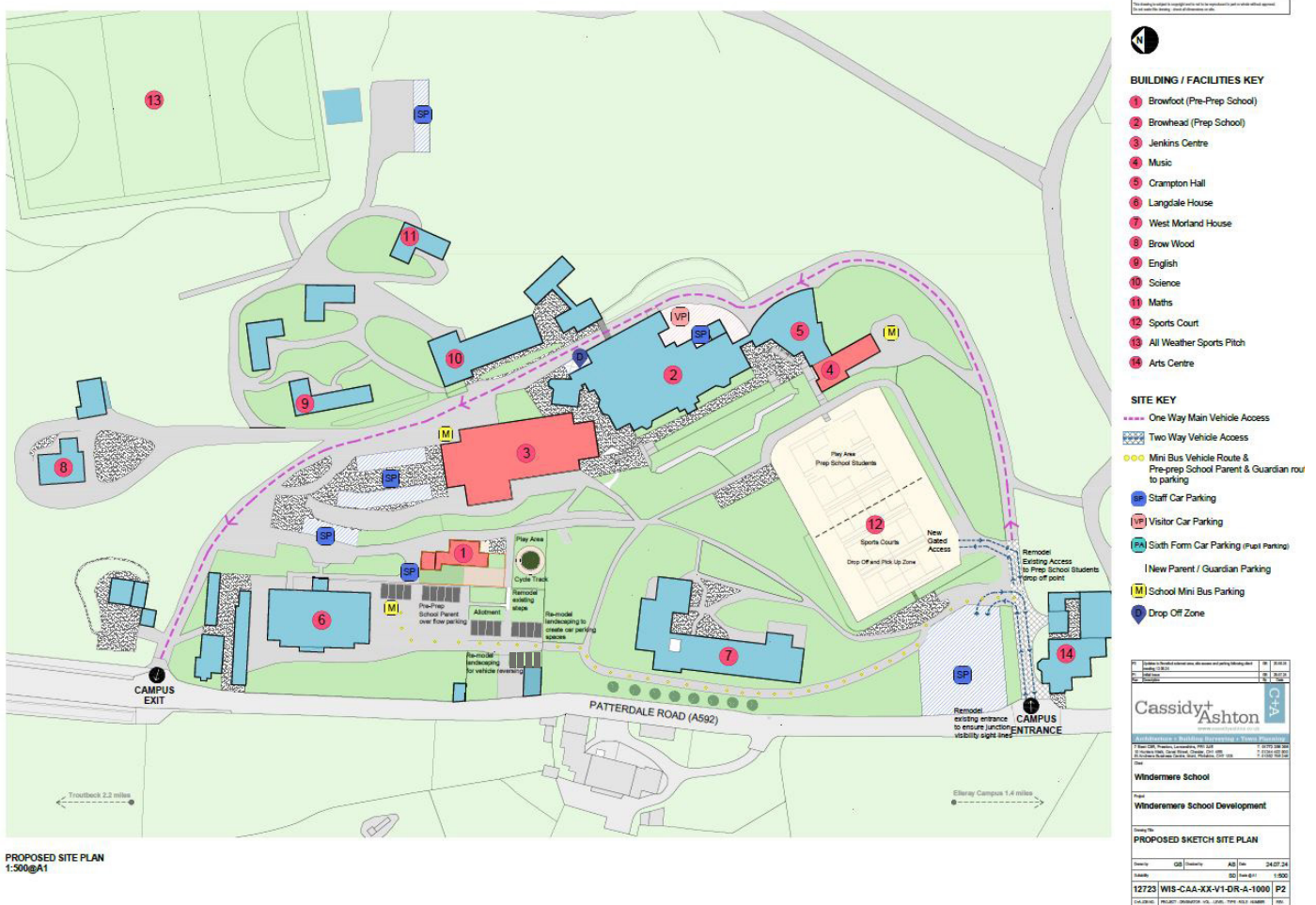


WINDERMERE SCHOOL SITE PLAN

Pre-School to Year 13

There is remodelling work being conducted site-wide to optimise parking for visitors, parents and staff. New parking spaces will be created at the base of the Pre-Prep, with parents also having the option to use the newly created ball court, also located below Pre-Prep building, as a spillover space. A section of the tennis courts will provide ample parking for the parents of children in Years 3 to 6. Please note that the tennis courts and ball court will be closed to parking during the school day so that they can still be used for sport and recreation. Relocating staff and bus parking will also open more spaces for all parents.

The single lane pathway running from the drive to the Pre-Prep has recently been resurfaced, and passing spaces will be added to ensure a drop off that is as smooth and stress free as possible. Additional parking bays have also been added below the allotment.





GET TO KNOW OUR GROUNDS

Browhead Campus



There will be several dedicated play areas located around the Pre-Prep building, including a sheltered area, cycle track, climbing wall and grass areas with play equipment. Several 'zones' have been put in place to allow staff to expand or contract spaces depending on the activity and appropriate supervision levels.

The children will have age-appropriate access to specific areas within the grounds. These will include dedicated space on the tennis courts, the front lawn, and the grass and wooded area between the Sixth Form boarding house, Westmorland and the Pre-Prep. There will also be plentiful opportunities to use the Astroturf, landscaped areas and woodlands.



Forest School will remain an integral part of our curriculum for the Pre-Prep children and will take place within the extensive wooded areas of the campus.

VIEW OUR VIRTUAL TOUR

You might also find it useful to look through the aerial and grounds shots of the campus on our virtual school tour.



